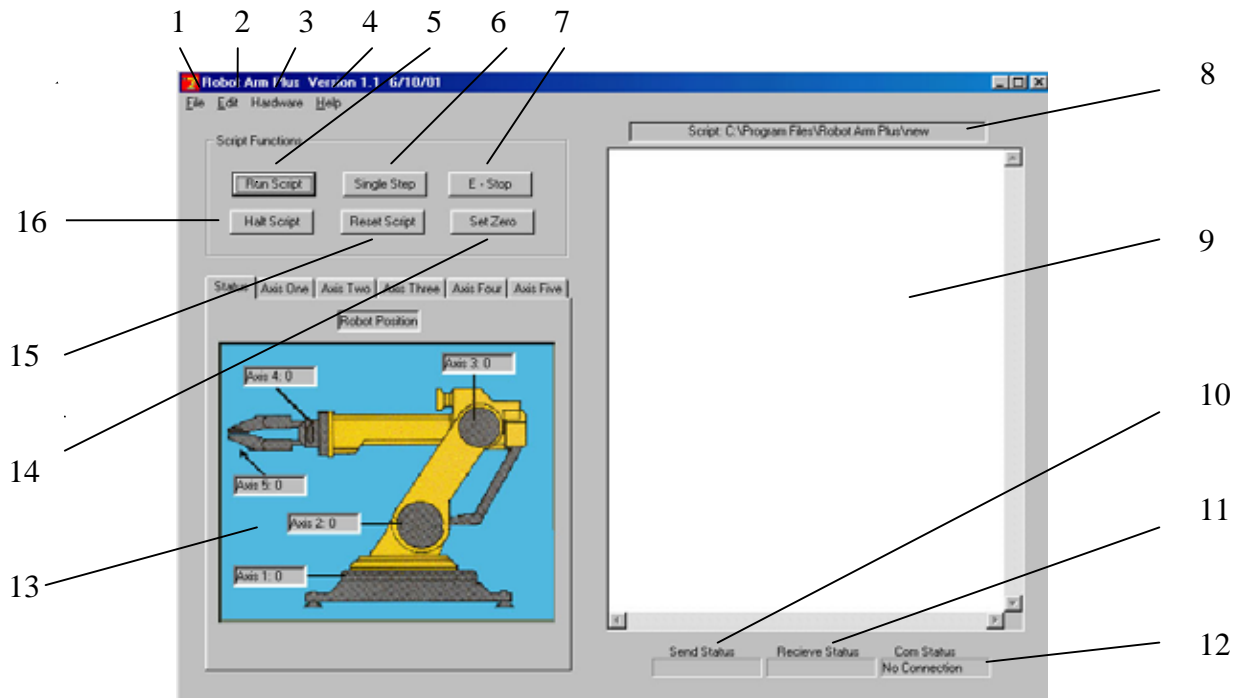


PC Interface for Robot Arm Plus



1. **File:** Pull down for script files for {your name}. New, Open, Close, Save, Save As, Print, and Delete functions are all used for making the script.
2. **Edit:** Pull down for Cut, Copy, Paste, Delete, Find, Replace, and Undo Typing.
3. **Hardware:** Pull down to select a Comm. port.
4. **Help:** Gives examples and suggestion to the selected topic.
5. **Run Script:** Begins running the open script file.
6. **Single Step:** When script is stopped, it runs one script line at a time.
7. **E-Stop:** Stops a running script and allows only joystick operation.
8. **Script File Name:** Shows name of script file being run.
9. **Script Window:** Used to display, edit, and run a script {motion programs} file.
10. **Send Status:** Reports information is being sent to robot.
11. **Receive Status:** Reports information is being received from robot.
12. **Comm. Status:** Shows if robot is connected to computer and proper port has been connected.
13. **Motion Control:** User can control motion of any axis with the “Robot Arm Plus” software, by pressing axis control tab for that axis.
14. **Set Zero:** Establishes communication with the robot, disables joysticks, and will zero the position of all axes.
15. **Reset Script:** The “Robot Arm Plus” software moves the command cursor to the to the beginning of the script.
16. **Halt Script:** Stops sending out commands to the robot and holds that position in script.